

BLACK KATZ

Management & Lettings



1 Bedroom Apartment Rent In OLD STREET-SHOREDITCH £ 484pw (£2095 pcm)

1 Bedroom Apartment Rent In OLD STREET-SHOREDITCH£ 484pw (£2095 pcm)

Black Katz are pleased to offer this stunning live-work one bedroom warehouse apartment offering loft style features and an impressive amount of space. The apartment is on the lower ground floor of an ex warehouse and comprises a large open-plan living room, one double bedroom and a modern tiled bathroom and exposed brickwork. Eagle Wharf Road offers easy access to the City, via either Old Street or Angel station (Northern Line) and is ideally located for the amenities of Shoreditch, Hoxton and Islington.

This property is rented directly from the landlord, Grainger, one of the UK's leading professional landlords, with over 100 years of experience. Grainger is committed to providing excellent customer service and offer low and transparent fees with long term, flexible tenancies. Grainger is accredited and regulated by a number of third party organisations including the London Rental Standard.

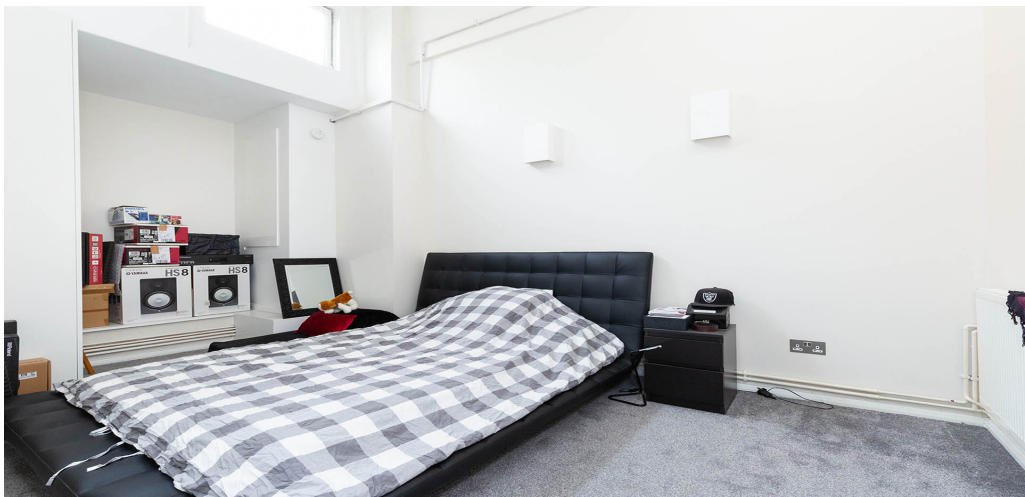
E.P.C. RATING: C

Property Features

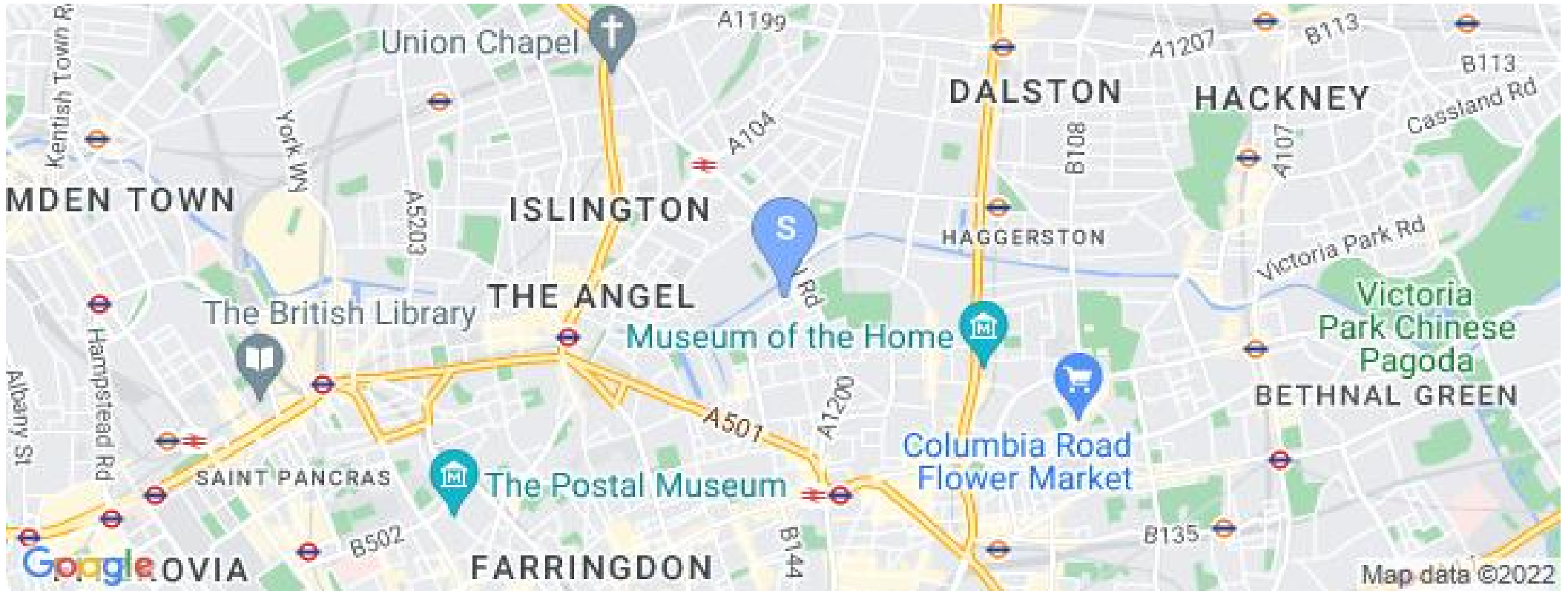
. Stripped Wooden Floors Throughout . Washing Machine . Dishwasher . Luxury Appliances . Fitted Kitchen . Close to local amenities . Close to Tube . Fantastic Transport Links . Zone 1 . 5 weeks deposit . Tiled bathroom . Open plan . Private Development . Warehouse conversion . Gas Central Heating . Excellent decorative order . Spacious Living Room . Washer Dryer . Exposed Brick Work

Place of Interest Locally

The Grove Nursery & Preschool - 0.25 miles. Nuffield Health Islington Fitness & Wellbeing Gym - 0.49 miles. SAE Institute London - 0.61 miles. The Bridge Academy - 0.78 miles. Nuffield Health Shoreditch Fitness & Wellbeing Gym - 0.8 miles. Urdang Academy - 0.91 miles. City of London School for Girls - 1.08 miles. Chartered Institute Of Housing - 1.29 miles. Nuffield Health Bloomsbury Fitness & Wellbeing Gym - 1.4 miles. City of London School - 1.61 miles. Saint Giles Colleges (London Central) - 1.69 miles. Nuffield Health City Fitness & Wellbeing Gym - 1.7 miles. City Lit - 1.87 miles. Mulberry School for Girls - 1.91 miles. The City Academy, Hackney - 2.02 miles.



1 Bedroom Apartment Rent In OLD STREET-SHOREDITCH£ 484pw (£2095 pcm)



Black Katz
22 Baron Street
London
N1 9ES

Manager:Raj Manandhar
Email:raj@blackkatz.com
Tel:020 7713 7337

Admin:Hugh Shaw
Email:Hugh@blackkatz.com

Office Hours:
Mon-Fri 9.00am-7.00pm
Sat-10am-2.00pm
(Please call beforehand)

We aim to make our particulars both accurate and reliable. However they are not guaranteed, nor do they form part of an offer or contract. If you require clarification on any points then please contact us. Please note that appliances and heating systems have not been tested and therefore no warranties can be given as to their good working order.