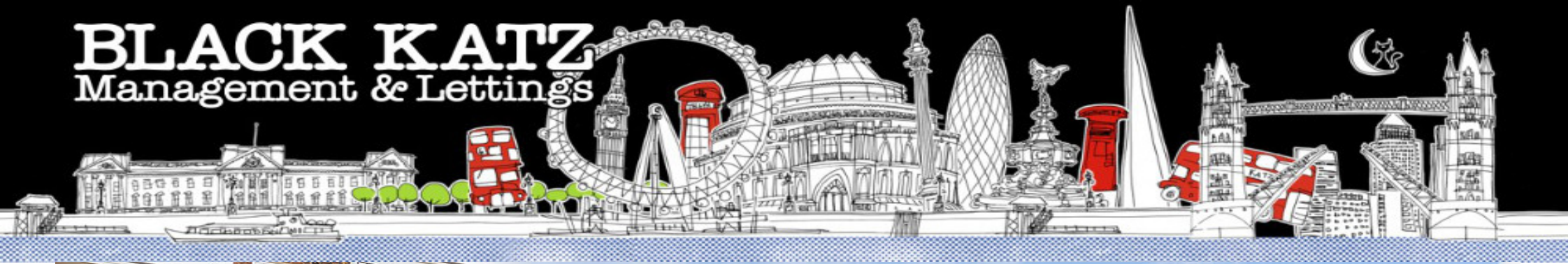


BLACK KATZ

Management & Lettings



1 Bedroom Flat Rent In ST JOHNS WOOD £450pw (£1950 pcm)

1 Bedroom Flat Rent In ST JOHNS WOOD£ 450pw (£1950 pcm)

Fantastic one bedroom flat set on the ground floor of a secure private block. The property has a good size lounge with wood floors , modern fitted kitchen, bathroom with shower and a double bedroom with ample storage space.

Northwick Terrace provides easy access to the shops and amenities found in and around Maida Vale and St John's Wood, with the open spaces of Regent's Park also within easy reach.

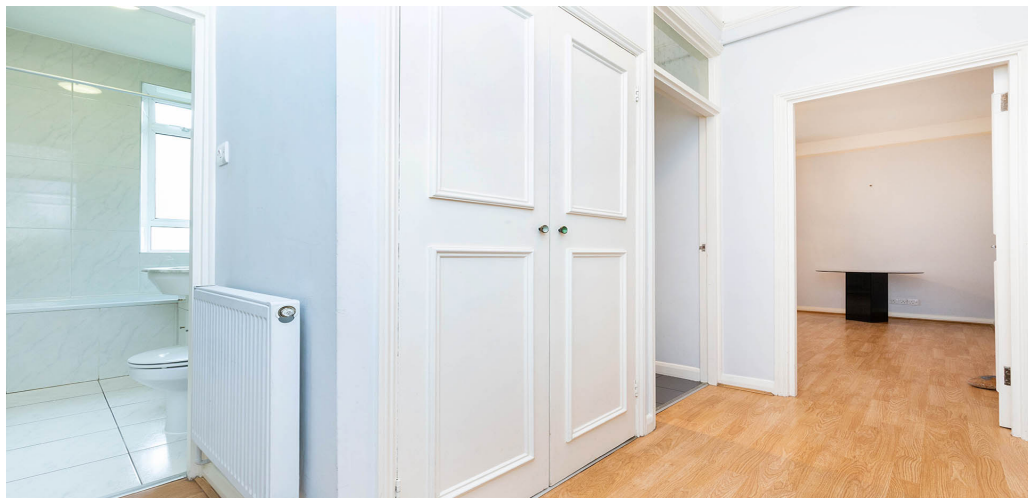
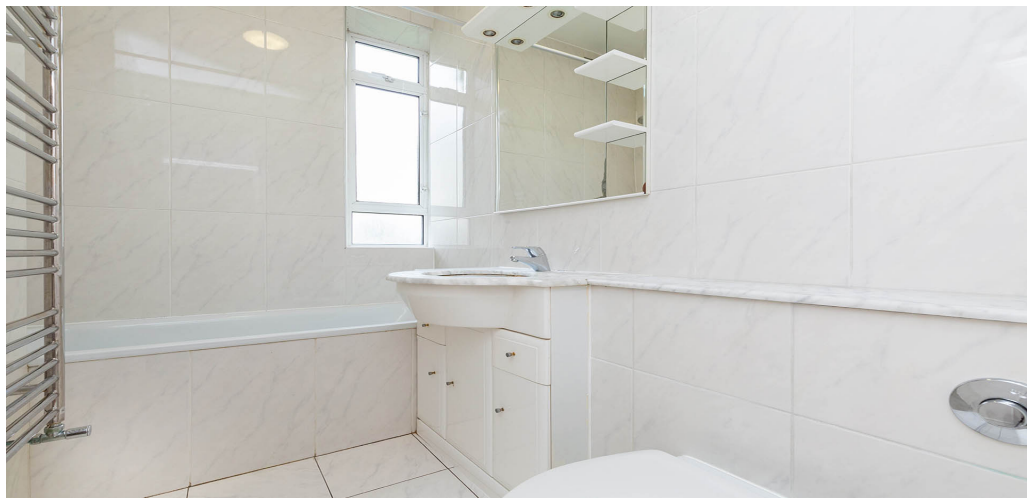
E.P.C. RATING: D

Property Features

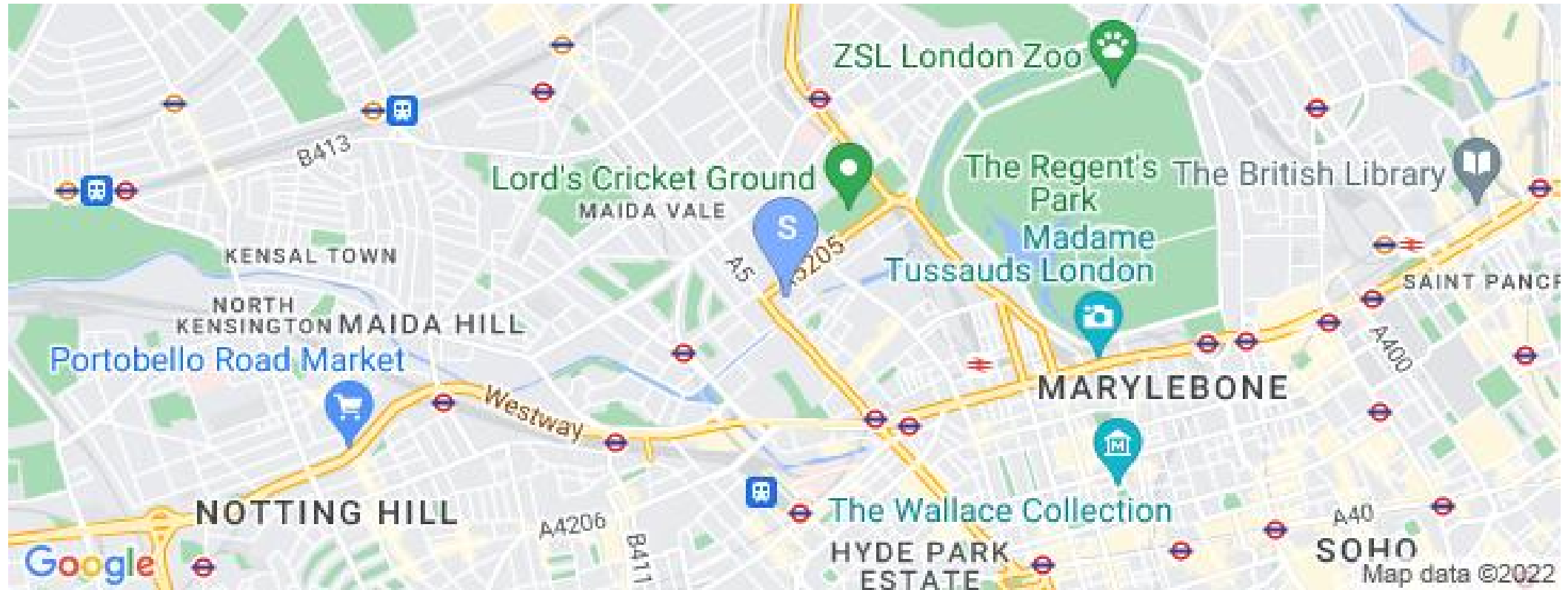
. Combination of wooden floors and carpets . Washing Machine . Fitted Kitchen . Separate kitchen . Tiled bathroom . Excellent decorative order

Place of Interest Locally

Sara Chiminelli - 0.14 miles. Westminster Adult Education Service - 0.2 miles. Gateway Academy - 0.24 miles. St. Joseph's Catholic Primary School - 0.27 miles. City of Westminster College, Paddington Green Campus - 0.33 miles. Church Street Nursery - 0.34 miles. Newpin!!! - 0.34 miles. Phileas Fox Nursery School - 0.37 miles. King Solomon Academy - 0.43 miles. Mansergh Hall - 0.46 miles. St Saviour's C of E Primary School - 0.47 miles. St John's Wood Pre-Preparatory School - 0.5 miles. Anglo-Russian Pre-school - 0.51 miles. Kumon Maths & English - 0.56 miles. Paddington Sports Club - 0.57 miles.



1 Bedroom Flat Rent In ST JOHNS WOOD£ 450pw (£1950 pcm)



Blackkatz
69 Parkway
Camden Town
London
NW1 7PP

Manager:Zia Anwar
Email:zia@blackkatz.com
Tel:020 7284 3111

Admin:Lauren Dean
Email:lauren@blackkatz.com

Office Hours:
Mon-Fri 9.00am-7.00pm
Sat-10am-2.00pm
(Please call beforehand)

We aim to make our particulars both accurate and reliable. However they are not guaranteed, nor do they form part of an offer or contract. If you require clarification on any points then please contact us. Please note that appliances and heating systems have not been tested and therefore no warranties can be given as to their good working order.