

# BLACK KATZ

Management & Lettings



**2 Bedroom Flat Rent In KINGS CROSS £ 550pw (£2383 pcm)**

## **2 Bedroom Flat Rent In KINGS CROSS£ 550pw (£2383 pcm)**

**<p>Available 23/9/2022</p><p>Contemporary two double bedroom flat that has been recently refurbished to a high standard in Kings Cross. Property has a modern bathroom, fully fitted modern kitchen, neutral decor, mix of carpets and wooden floors and a large lounge with a private balcony.</p><p>Birkenhead Street is located within close proximity of the shops, bars and restaurants of Bloomsbury, Clerkenwell and Islington. King&#39;s Cross St. Pancras Underground Station (Northern, Victoria, Piccadilly, Circle, Hammersmith & City, Metropolitan lines, National Rail) is close by for easy access to central London.</p>**

**E.P.C. RATING: C**

### **Property Features**

**. Combination of wooden floors and carpets . Washing Machine . Fitted Kitchen . Separate kitchen . Close to local amenities . Close to Tube . Fantastic Transport Links . Zone 1 . 5 weeks deposit . Tiled bathroom . Purpose built development . Managed by Black Katz for your peace of mind . Gas Central Heating . Double Glazed . Excellent decorative order . Spacious Living Room**

### **Place of Interest Locally**

**Chartered Institute Of Housing - 0.16 miles. Nuffield Health Bloomsbury Fitness & Wellbeing Gym - 0.43 miles. Saint Giles Colleges (London Central) - 0.58 miles. North London Music Academy - 0.93 miles. Nuffield Health Islington Fitness & Wellbeing Gym - 1.01 miles. City Lit - 1.04 miles. The Grove Nursery & Preschool - 1.46 miles. European School Of Economics - 1.56 miles. City of London School - 1.59 miles. Jane Packer Flowers - 1.74 miles. Nuffield Health Shoreditch Fitness & Wellbeing Gym - 1.85 miles. Nuffield Health City Fitness & Wellbeing Gym - 1.89 miles. SAE Institute London - 1.99 miles. Gospel Oak Primary School - 2.17 miles. Westminster School - 2.2 miles.**



## 2 Bedroom Flat Rent In KINGS CROSS £ 550pw (£2383 pcm)

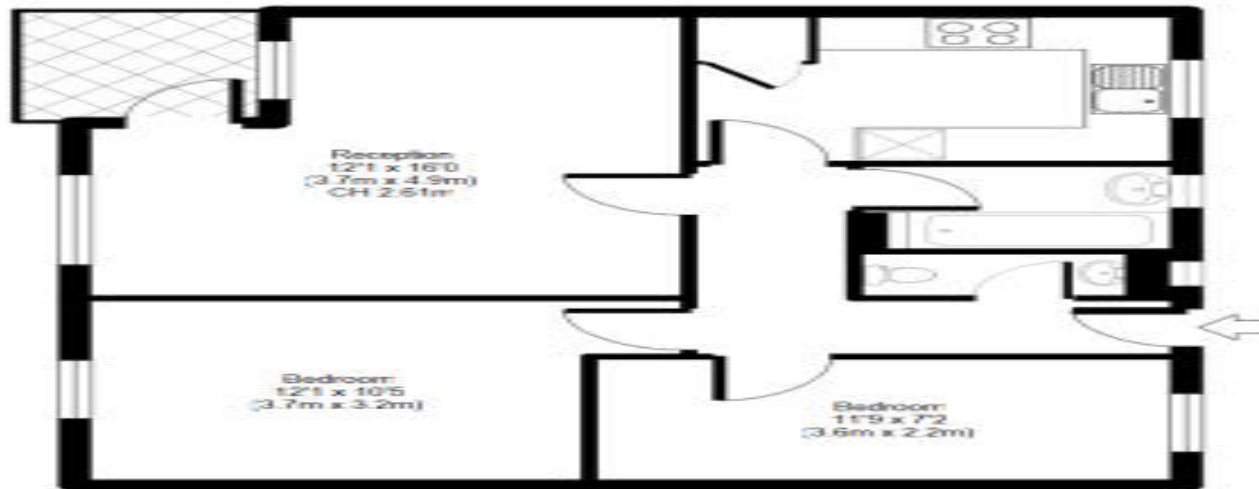
### Riverside

APPROX GROSS INTERNAL FLOOR AREA 559.41 sq. ft / 51.99 sq. m

( CH = Ceiling Heights )

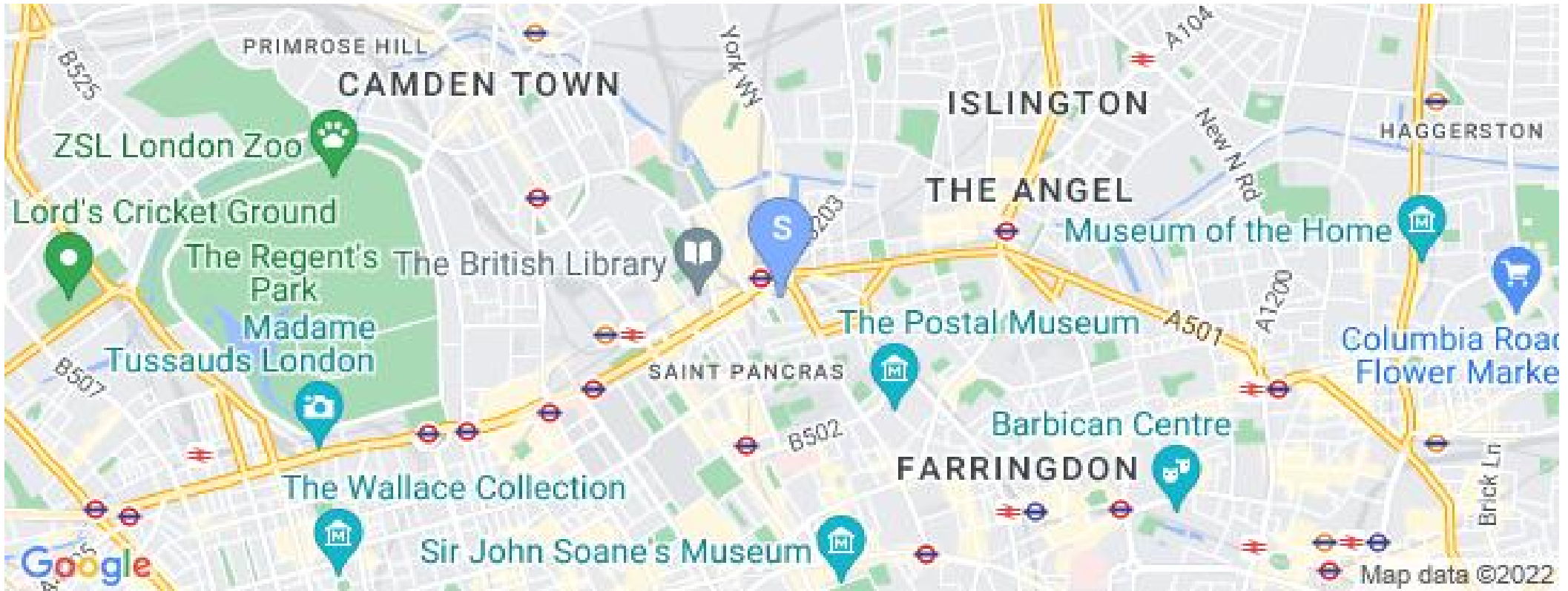


Fourth Floor Flat



Whilst every attempt has been made to ensure accuracy of the floor plan contained here, all measurements are to be considered approximate and no responsibility is taken for any error or mis-statement. This plan is for illustrative purposes only, and should be treated as such by any prospective purchaser.

## 2 Bedroom Flat Rent In KINGS CROSS £ 550pw (£2383 pcm)



**Black Katz**  
22 Baron Street  
London  
N1 9ES

**Manager: Raj Manandhar**  
Email: [raj@blackkatz.com](mailto:raj@blackkatz.com)  
Tel: 020 7713 7337

**Admin: Hugh Shaw**  
Email: [Hugh@blackkatz.com](mailto:Hugh@blackkatz.com)

**Office Hours:**  
Mon-Fri 9.00am-7.00pm  
Sat-10am-2.00pm  
(Please call beforehand)

We aim to make our particulars both accurate and reliable. However they are not guaranteed, nor do they form part of an offer or contract. If you require clarification on any points then please contact us. Please note that appliances and heating systems have not been tested and therefore no warranties can be given as to their good working order.