

BLACK KATZ

Management & Lettings



3 Bedroom Flat To Rent In MAIDA VALE £1095pw (£4745 pcm)

3 Bedroom Flat To Rent In MAIDA VALE£ 1095pw (£4745 pcm)

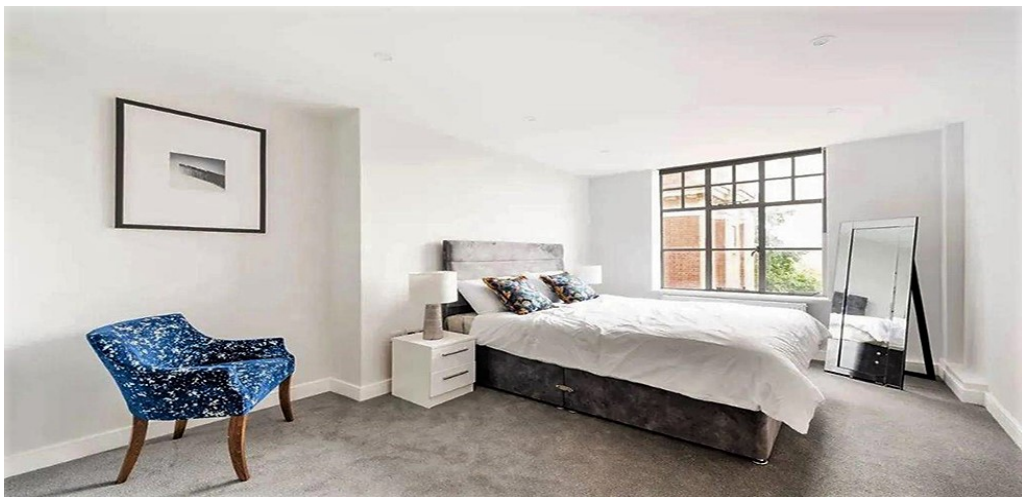
Recently refurbished this stunning three-bedroom apartment is set on the fifth floor within an imposing red brick Mansion Block. The property has a spacious master bedroom, two further double bedrooms, two modern tiled bathrooms, spacious reception room, separate fully fitted luxury modern kitchen and ample storage space.

Clive Court is a well-maintained block with a porter and lift and is located within close proximity to the excellent amenities of Little Venice, Clifton Road and Warwick Avenue (Bakerloo).

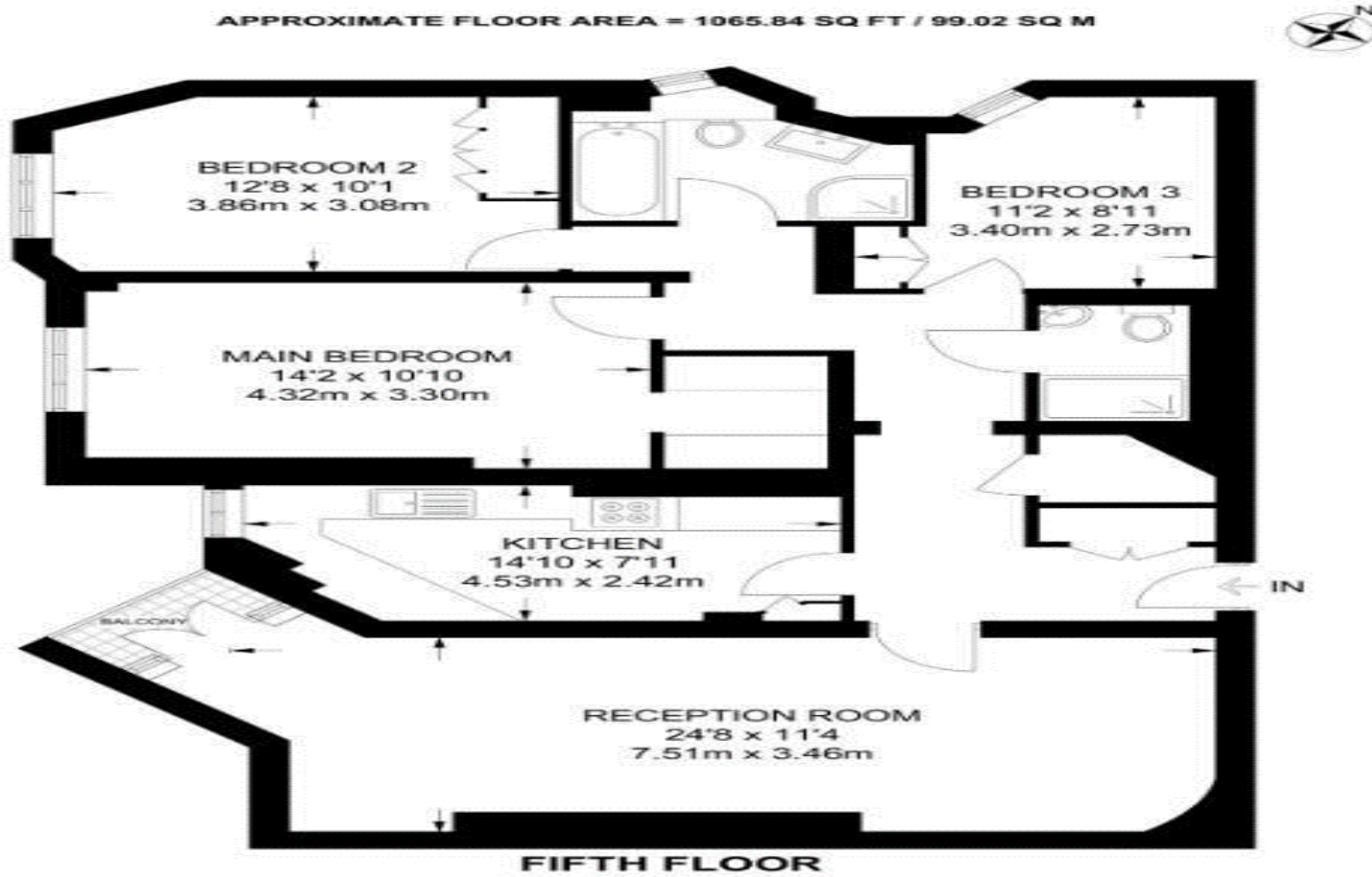
E.P.C. RATING: C

Property Features

. Washing Machine . Luxury Appliances . Fitted Kitchen . Separate kitchen . Zone 2 . Tiled bathroom . Two Bathrooms . En suite bathroom . Private mansion block . Central Heating . Excellent decorative order . Spacious Living Room . Period features



3 Bedroom Flat To Rent In MAIDA VALE £ 1095pw (£4745 pcm)



3 Bedroom Flat To Rent In MAIDA VALE £ 1095pw (£4745 pcm)



West End Office
69 Parkway
London
NW1 7PP

Manager: Zia Anwar
Email: zia@blackkatz.com
Tel: 0207 267 1115

Admin: Lauren Dean
Email: lauren@blackkatz.com

Office Hours:
Mon-Fri 9.00am-7.00pm
Sat-10am-2.00pm
(Please call beforehand)

We aim to make our particulars both accurate and reliable. However they are not guaranteed, nor do they form part of an offer or contract. If you require clarification on any points then please contact us. Please note that appliances and heating systems have not been tested and therefore no warranties can be given as to their good working order.