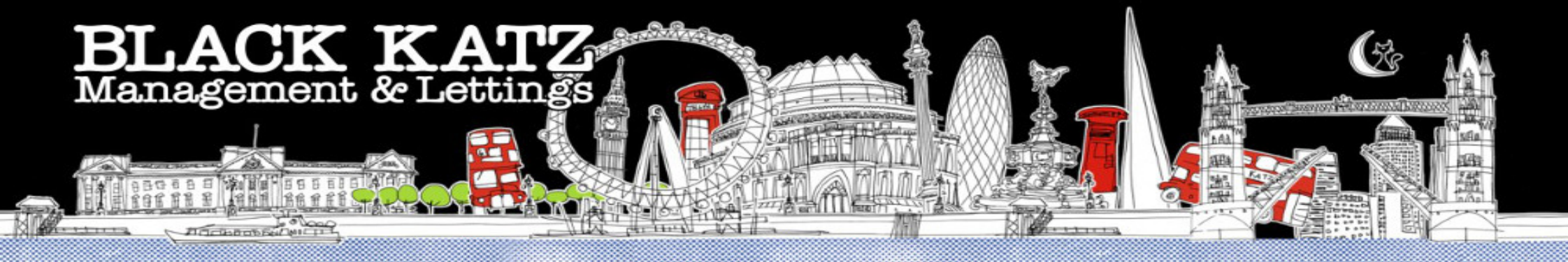


# BLACK KATZ

Management & Lettings



**Studio Apartment Apartment To Rent In Southwark £410 p.w. (£1776 pcm)**

## **Studio Apartment Apartment To Rent In Southwark £ 410 p.w. (£1776 pcm)**

--Available 3rd March--&nbsp;</p><p>Located on the first floor of this handsome Georgian building moments away from Southwark Tube Station. This beautiful bright and airy double studio (505 Sq.Ft.) is located on the first floor of this handsome Georgian building moments from Lambeth North Tube Station (Bakerloo Line). Larger than average and benefiting from a&nbsp;separate kitchen, modern bathroom, high ceilings, very good storage and gorgeous large windows flooding the property with natural light. Various amenities are on your door step and the delights of The South bank are also easily reachable.</p>

**E.P.C. RATING: D**

### **Property Features**

. Beautiful tree lined street . Carpets throughout . Washing Machine . Fitted Kitchen . Separate kitchen . Close to local amenities . Close to Tube . Fantastic Transport Links . 5 weeks deposit . Period Conversion . Period House . Double Glazed . Good decorative order

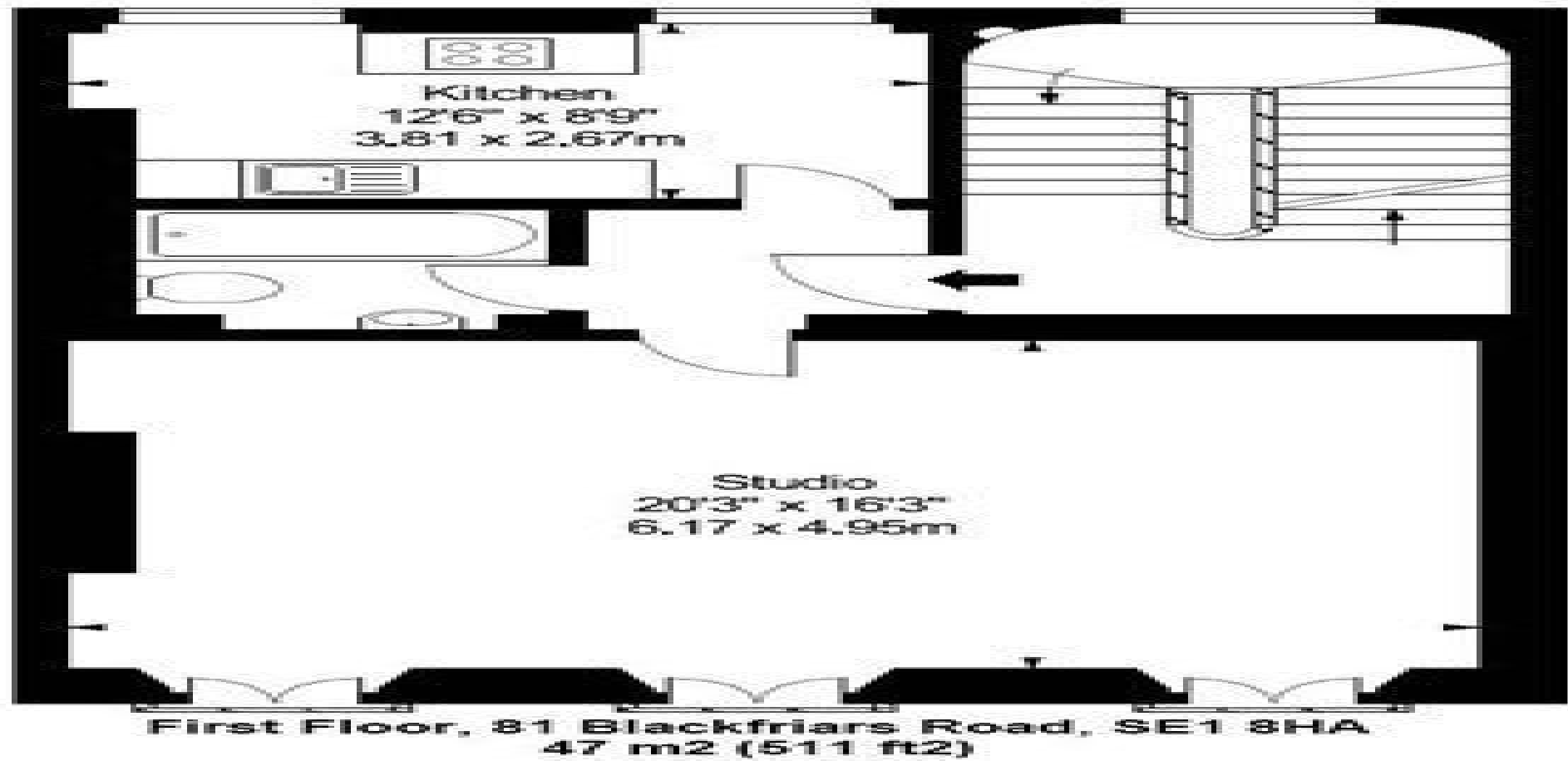
### **Place of Interest Locally**

Notre Dame Roman Catholic Girls' School - 0.43 miles. City of London School - 0.65 miles. Nuffield Health City Fitness & Wellbeing Gym - 0.74 miles. City Lit - 1.05 miles. Westminster School - 1.06 miles. English Martyr's Primary School - Annexe Building - 1.09 miles. City of London School for Girls - 1.19 miles. Lambeth School of Art - 1.25 miles. Saint Giles Colleges (London Central) - 1.51 miles. Nuffield Health Bloomsbury Fitness & Wellbeing Gym - 1.55 miles. Queen Mother Sports Centre - 1.68 miles. Chartered Institute Of Housing - 1.85 miles. Nuffield Health Shoreditch Fitness & Wellbeing Gym - 1.88 miles. Eveline Lowe Primary School - 1.95 miles. European School Of Economics - 2.19 miles.





**Studio Apartment Apartment To Rent In Southwark £ 410 p.w. (£1776 pcm)**





## Studio Apartment Apartment To Rent In Southwark £ 410 p.w. (£1776 pcm)



**Black Katz**  
**78 Borough High Street**  
**London Bridge**  
**SE1 1LL**

**Manager: Alex Nunzi**  
**Email: [alex@blackkatz.com](mailto:alex@blackkatz.com)**  
**Tel: 020 7403 5010**

**Admin: Amy Burbridge**  
**Email: [amy.burbridge@blackkatz.com](mailto:amy.burbridge@blackkatz.com)**  
**m**

**Office Hours:**  
**Mon-Fri 9.00am-7.00pm**  
**Sat-10am-2.00pm**  
**(Please call beforehand)**

We aim to make our particulars both accurate and reliable. However they are not guaranteed, nor do they form part of an offer or contract. If you require clarification on any points then please contact us. Please note that appliances and heating systems have not been tested and therefore no warranties can be given as to their good working order.